



Josiah Quincy Orchestra Program
Music Literacy Packet

SIBELIUS ORCHESTRA

Viola

March 17 - April 17, 2020

4 Things to do Every Practice Session

1. Play a Scale

2. Work on a Technique (bow
hold, slurs, rhythm, reading, etc)

3. Practice a New Piece

4. Play Something Fun

Musical Activities without an Instrument

Toss a penny on the board and do the activity listed!

Sing a song with your family	Take turns humming a song and see how long it takes the other person to guess what it is	Learn about a composer
Pick a new radio/spotify station	Compile a playlist of favorite songs of your family	Learn about a performer
Turn a household item into an instrument	Make up a song with silly words	Draw a picture inspired by music

The Staff - Treble Clef

At the beginning of each staff there is a clef. The treble clef (also known as G clef) looks like this:



The treble clef gives establishes a landmark on the note G on the 2nd line of the treble staff.

To draw the treble clef, draw:
the line and tail



1.

the top loop



2.

the left loop



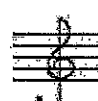
3.

the right loop



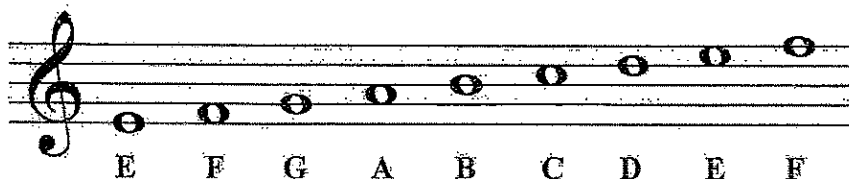
4.

the curl

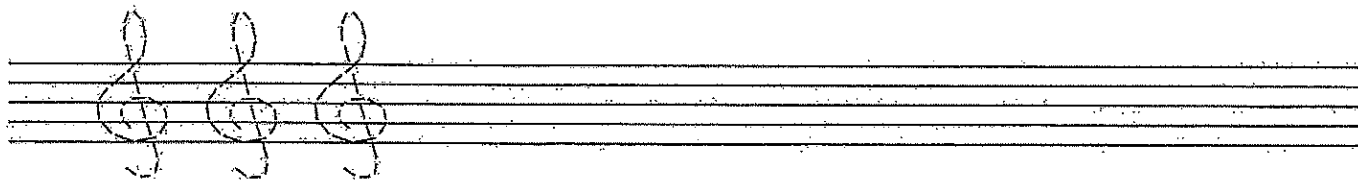


5.

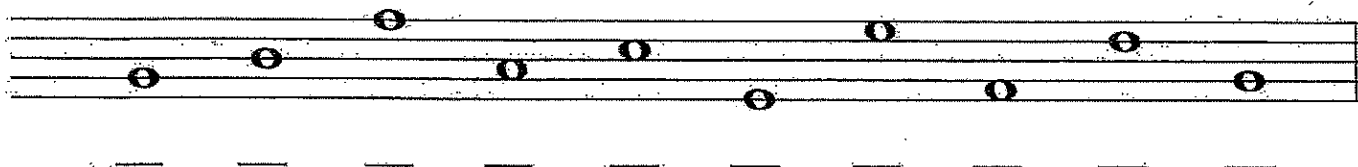
Notes are named after the first seven letters of the alphabet (A through G).



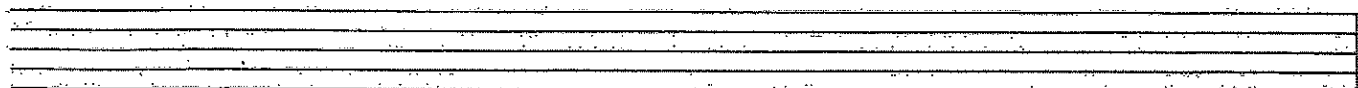
1. Try drawing the treble clef sign by tracing over the dotted lines. Then draw five more of your own.



2. Draw a treble clef at the beginning of the staff. Then write the letter names of each note.



3. Draw a treble clef at the beginning of the staff. Then draw the notes indicated. If a note can be written on more than one place on the staff, choose one.



G E B C D B A C D F

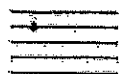
The Staff - Bass Clef

The bass clef (also known as F clef) looks like this:

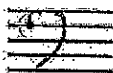


The bass clef gives a landmark on the note F on the 4th line of the bass staff.

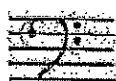
To draw the bass clef, draw:
a black dot



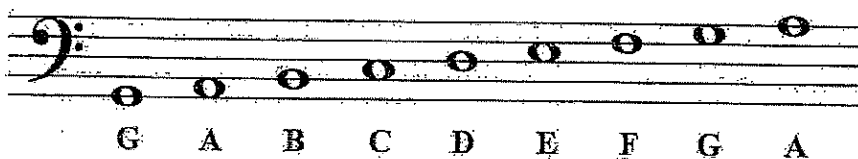
a curve



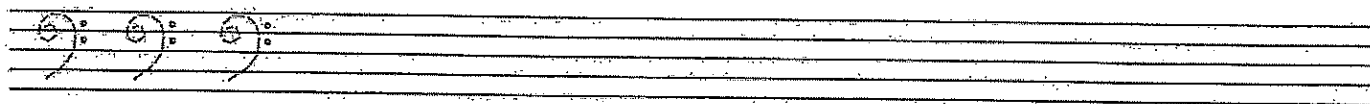
two dots



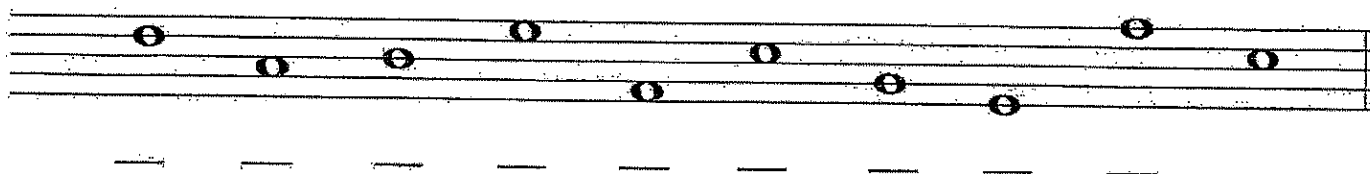
Notes are named after the first seven letters of the alphabet (A through G).



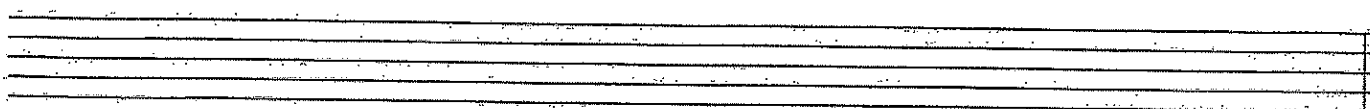
1. Try drawing the bass clef sign by tracing over the dotted lines. Then draw five more of your own.



2. Draw a bass clef at the beginning of the staff. Then write the letter names of each note.



3. Draw a treble clef at the beginning of the staff. Then draw the notes indicated. If a note can be written on more than one place on the staff, choose one.



F G A D F C B G D E

Name _____

Musical Terms

Worksheet #2

Fill in the blank. Write the term for each symbol in the blank provided.

1. _____ *mf*


6. _____ 

2. _____ 

7. _____ *p*

3. _____ *mp*

8. _____ 

4. _____ 

9. _____ 

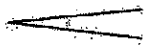
5. _____ *f*

10. _____ 

Matching. Draw a line from each symbol to its musical term.



1. *Crescendo*



2. Time signature



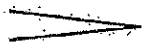
3. Barline



4. *Decrescendo*



5. *Ritardando*



6. Repeat sign

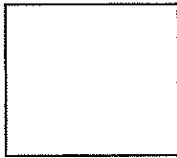
rit.

7. Double barline

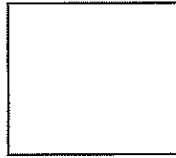
Match the Symbols

_____ Name

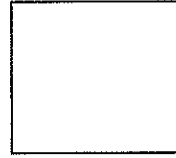
Open this file using Sibelius Software. Drag the symbols to their proper boxes.



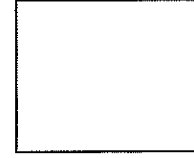
Whole-note



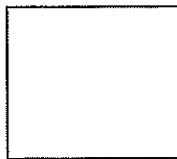
Half note



Quarter Note



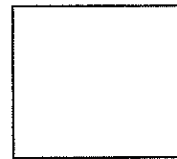
Eighth Note



Forte



Piano



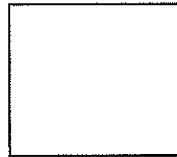
Bass clef



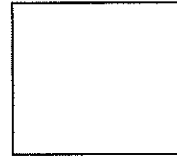
Treble Clef



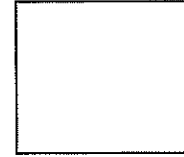
Sharp



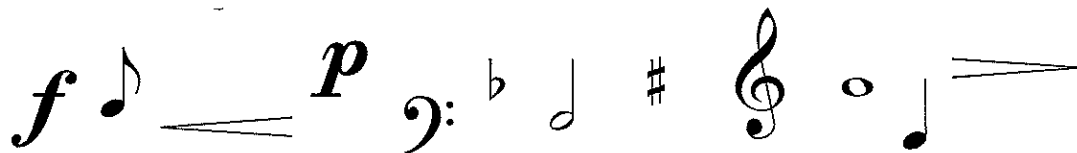
Flat



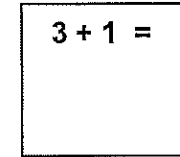
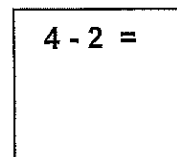
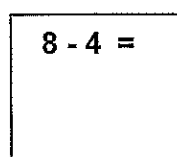
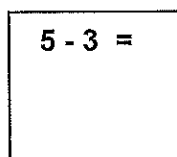
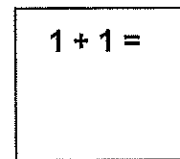
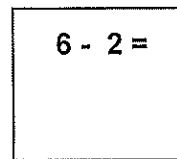
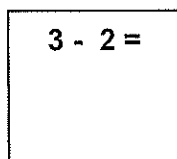
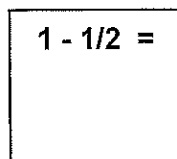
Crescendo



Decrescendo



Add or subtract the problem, then drag the symbols to their proper boxes.

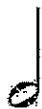


Name: _____

Musical Terms

Worksheet #1

Matching. Draw a line from each symbol to its musical term.



1. Quarter note

2. Treble clef

3. *Forte*

4. Dotted half note

5. *Mezzo piano*

6. Whole note

7. *Piano*

8. Bass clef

9. *Mezzo forte*

10. Half note

Viola

Scales

D Major Scale

5

5

The first staff shows measures 1 through 4 of the D Major Scale. The key signature has two sharps (F# and C#), and the time signature is 2/4. The notes are: D4 (quarter), E4 (quarter), F#4 (quarter), G4 (quarter), A4 (quarter), B4 (quarter), C#5 (quarter), D5 (quarter), C#5 (quarter), B4 (quarter), A4 (quarter), G4 (quarter), F#4 (quarter), E4 (quarter), D4 (half). The staff ends with a double bar line and a sharp sign.

G Major Scale

9

9

The second staff shows measures 5 through 8 of the G Major Scale. The key signature has one sharp (F#), and the time signature is 2/4. The notes are: G4 (quarter), A4 (quarter), B4 (quarter), C5 (quarter), B4 (quarter), A4 (quarter), G4 (quarter), F#4 (quarter), E4 (quarter), D4 (quarter), C4 (half). The staff ends with a double bar line and a sharp sign.

C Major Scale

13

13

The third staff shows measures 9 through 12 of the C Major Scale. The key signature has no sharps or flats, and the time signature is 2/4. The notes are: C4 (quarter), D4 (quarter), E4 (quarter), F4 (quarter), G4 (quarter), A4 (quarter), B4 (quarter), C5 (quarter), B4 (quarter), A4 (quarter), G4 (quarter), F4 (quarter), E4 (quarter), D4 (quarter), C4 (half). The staff ends with a double bar line and a sharp sign.

C Major Scale 2

21

21

The fourth staff shows measures 13 through 20 of the C Major Scale 2. The key signature has no sharps or flats, and the time signature is 2/4. The notes are: C4 (quarter), D4 (quarter), E4 (quarter), F4 (quarter), G4 (quarter), A4 (quarter), B4 (quarter), C5 (quarter), B4 (quarter), A4 (quarter), G4 (quarter), F4 (quarter), E4 (quarter), D4 (quarter), C4 (half). The staff ends with a double bar line and a sharp sign.

G Major Scale 2

21

21

The fifth staff shows measures 21 through 28 of the G Major Scale 2. The key signature has one sharp (F#), and the time signature is 2/4. The notes are: G4 (quarter), A4 (quarter), B4 (quarter), C5 (quarter), B4 (quarter), A4 (quarter), G4 (quarter), F#4 (quarter), E4 (quarter), D4 (quarter), C4 (half). The staff ends with a double bar line and a sharp sign.

Viola

A Natural Minor

2 L2 L2

This musical staff shows the first four measures of the A Natural Minor scale for Viola. The key signature has one flat (B-flat) and the time signature is 4/4. The notes are: G3 (quarter), A3 (quarter), Bb3 (quarter), C4 (quarter), D4 (quarter), E4 (quarter), F4 (quarter), and G4 (half). Fingering is indicated: '2' above the second measure (A3) and 'L2' above the third and fourth measures (D4 and E4).

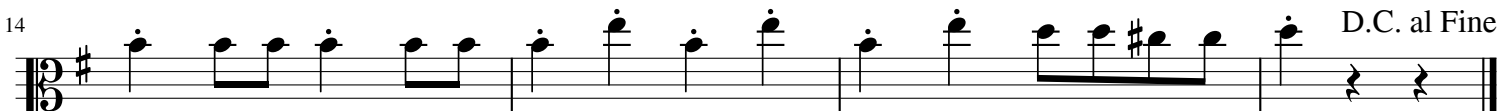
5

This musical staff shows the fifth and sixth measures of the A Natural Minor scale for Viola. The notes are: A4 (quarter), Bb4 (quarter), C5 (quarter), D5 (half), C5 (quarter), Bb4 (quarter), and A4 (half). The measure number '5' is written above the first measure.

Viola

William Tell Overture

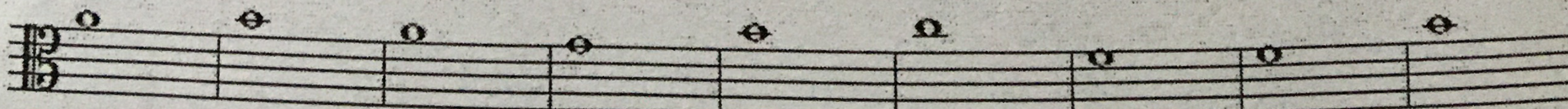
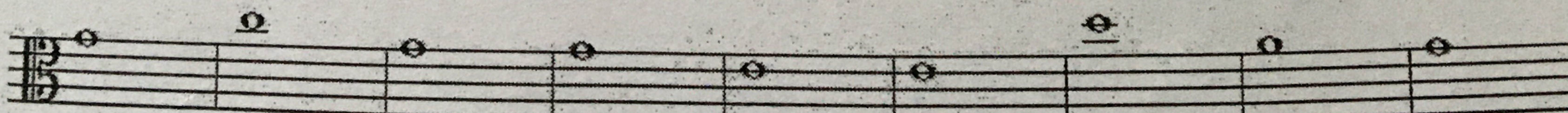
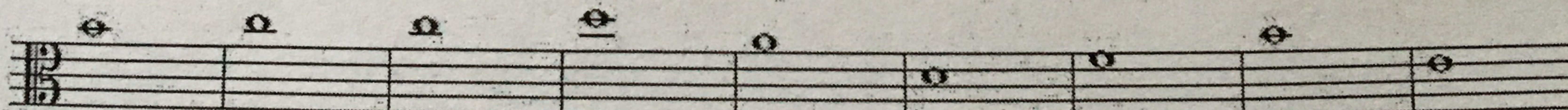
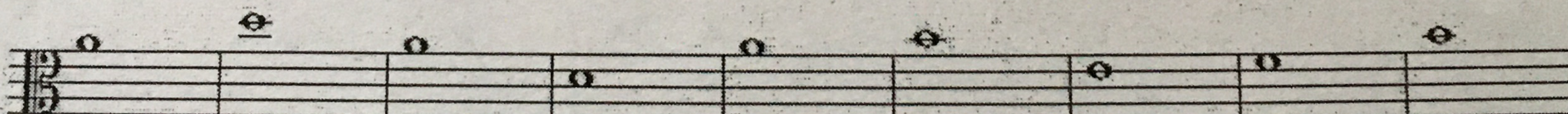
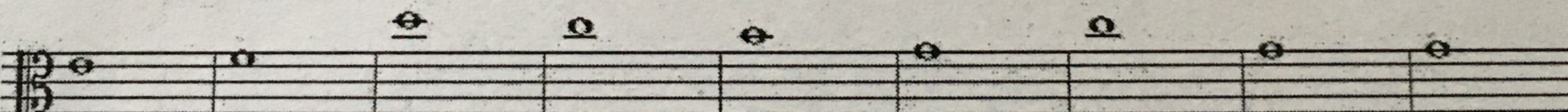
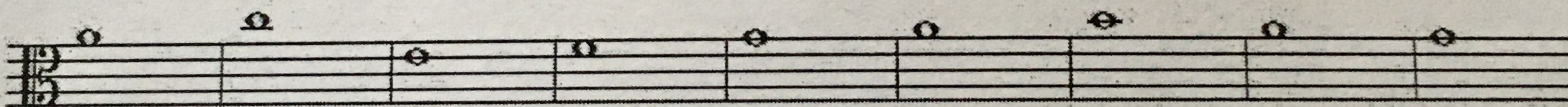
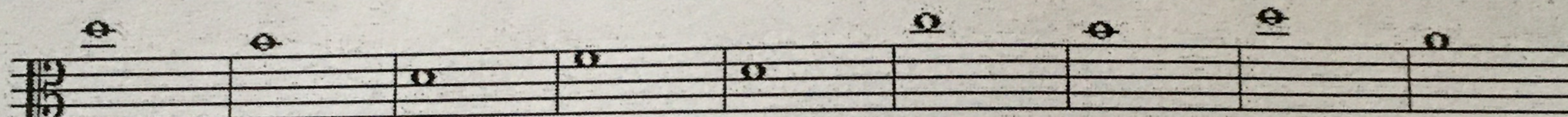
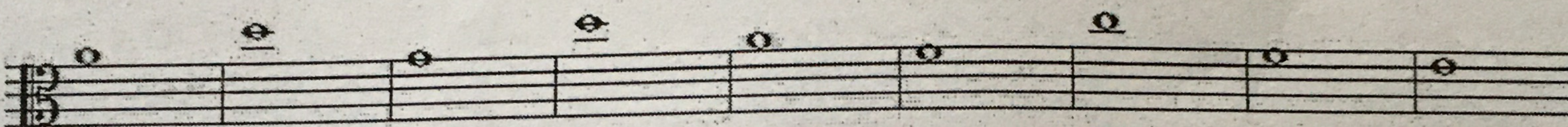
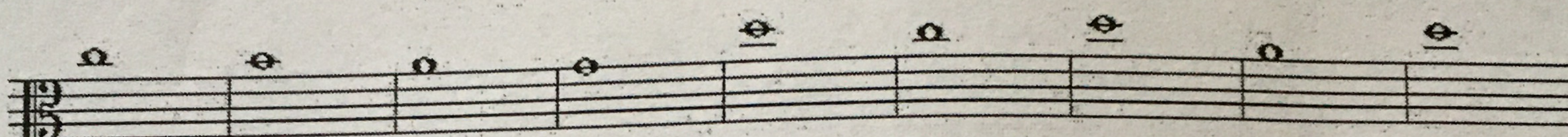
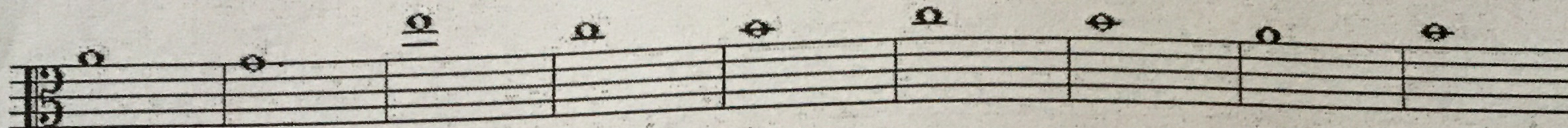
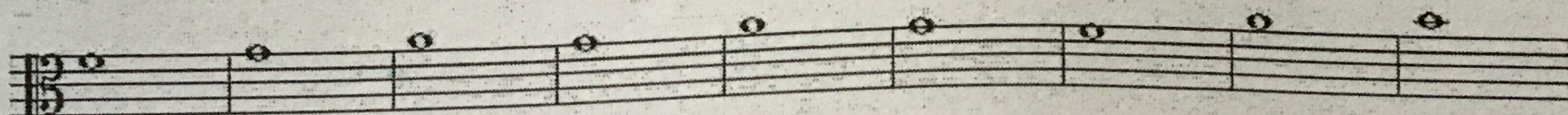
G. Rossini Arr. J. Higgins



Name _____

Viola Practice Worksheet (99 Notes)

Directions: Write the name of the note under each note.



Viola

Reading

Pitch

White 1

2



9 3

4



17 5

6



25 7

8



33 9

10



41 11 Yellow

12



49 13

14



57 15

16



65 17

18



73

19

20



81

21

22



89

23

24



97

25

26



105

27

28



113

29

30



121

31

32



129

33

34



137

35

36




145

37

38



153 **39** **40**




Handwritten musical notation for measures 39 and 40. The staff is in bass clef with a key signature of one sharp (F#). Measure 39 contains eight eighth notes: G2, A2, B2, C3, D3, E3, F#3, G3. Measure 40 contains eight eighth notes: A2, B2, C3, D3, E3, F#3, G3, A3. The staff ends with a double bar line.

161 **41** **42**




Handwritten musical notation for measures 41 and 42. The staff is in bass clef with a key signature of one sharp (F#). Measure 41 contains eight eighth notes: A2, B2, C3, D3, E3, F#3, G3, A3. Measure 42 contains eight eighth notes: B2, C3, D3, E3, F#3, G3, A3, B3. The staff ends with a double bar line.

169 **43** **44**




Handwritten musical notation for measures 43 and 44. The staff is in bass clef with a key signature of one sharp (F#). Measure 43 contains eight eighth notes: C3, D3, E3, F#3, G3, A3, B3, C4. Measure 44 contains eight eighth notes: D3, E3, F#3, G3, A3, B3, C4, D4. The staff ends with a double bar line.

177 **45** **46**




Handwritten musical notation for measures 45 and 46. The staff is in bass clef with a key signature of one sharp (F#). Measure 45 contains eight eighth notes: E3, F#3, G3, A3, B3, C4, D4, E4. Measure 46 contains eight eighth notes: F#3, G3, A3, B3, C4, D4, E4, F#4. The staff ends with a double bar line.

185 **47** **48**




Handwritten musical notation for measures 47 and 48. The staff is in bass clef with a key signature of one sharp (F#). Measure 47 contains eight eighth notes: G3, A3, B3, C4, D4, E4, F#4, G4. Measure 48 contains eight eighth notes: A3, B3, C4, D4, E4, F#4, G4, A4. The staff ends with a double bar line.

193 **49** **50**




Handwritten musical notation for measures 49 and 50. The staff is in bass clef with a key signature of one sharp (F#). Measure 49 contains eight eighth notes: B3, C4, D4, E4, F#4, G4, A4, B4. Measure 50 contains eight eighth notes: C4, D4, E4, F#4, G4, A4, B4, C5. The staff ends with a double bar line.

201 **51** Orange **52**




Handwritten musical notation for measures 51 and 52. The staff is in bass clef with a key signature of one sharp (F#). Measure 51 contains eight eighth notes: D4, E4, F#4, G4, A4, B4, C5, D5. Measure 52 contains eight eighth notes: E4, F#4, G4, A4, B4, C5, D5, E5. The staff ends with a double bar line.

209 **53** **54**




Handwritten musical notation for measures 53 and 54. The staff is in bass clef with a key signature of one sharp (F#). Measure 53 contains eight eighth notes: F#4, G4, A4, B4, C5, D5, E5, F#5. Measure 54 contains eight eighth notes: G4, A4, B4, C5, D5, E5, F#5, G5. The staff ends with a double bar line.

217 **55** **56**



Handwritten musical notation for measures 55 and 56. The staff is in bass clef with a key signature of one sharp (F#). Measure 55 contains eight eighth notes: A4, B4, C5, D5, E5, F#5, G5, A5. Measure 56 contains eight eighth notes: B4, C5, D5, E5, F#5, G5, A5, B5. The staff ends with a double bar line.

225 **57** **58**



Handwritten musical notation for measures 57 and 58. The staff is in bass clef with a key signature of one sharp (F#). Measure 57 contains eight eighth notes: C5, D5, E5, F#5, G5, A5, B5, C6. Measure 58 contains eight eighth notes: D5, E5, F#5, G5, A5, B5, C6, D6. The staff ends with a double bar line.

233 **59** **60**

Handwritten musical notation for measures 59 and 60. The staff is in 2/4 time with a key signature of one sharp (F#). Measure 59 contains the notes G4, A4, B4, C5, D5, E5, F#5, G5, A5, B5, C6, D6, E6, F#6, G6, A6, B6, C7, D7, E7, F#7, G7, A7, B7, C8, D8, E8, F#8, G8, A8, B8, C9, D9, E9, F#9, G9, A9, B9, C10, D10, E10, F#10, G10, A10, B10, C11, D11, E11, F#11, G11, A11, B11, C12, D12, E12, F#12, G12, A12, B12, C13, D13, E13, F#13, G13, A13, B13, C14, D14, E14, F#14, G14, A14, B14, C15, D15, E15, F#15, G15, A15, B15, C16, D16, E16, F#16, G16, A16, B16, C17, D17, E17, F#17, G17, A17, B17, C18, D18, E18, F#18, G18, A18, B18, C19, D19, E19, F#19, G19, A19, B19, C20, D20, E20, F#20, G20, A20, B20, C21, D21, E21, F#21, G21, A21, B21, C22, D22, E22, F#22, G22, A22, B22, C23, D23, E23, F#23, G23, A23, B23, C24, D24, E24, F#24, G24, A24, B24, C25, D25, E25, F#25, G25, A25, B25, C26, D26, E26, F#26, G26, A26, B26, C27, D27, E27, F#27, G27, A27, B27, C28, D28, E28, F#28, G28, A28, B28, C29, D29, E29, F#29, G29, A29, B29, C30, D30, E30, F#30, G30, A30, B30, C31, D31, E31, F#31, G31, A31, B31, C32, D32, E32, F#32, G32, A32, B32, C33, D33, E33, F#33, G33, A33, B33, C34, D34, E34, F#34, G34, A34, B34, C35, D35, E35, F#35, G35, A35, B35, C36, D36, E36, F#36, G36, A36, B36, C37, D37, E37, F#37, G37, A37, B37, C38, D38, E38, F#38, G38, A38, B38, C39, D39, E39, F#39, G39, A39, B39, C40, D40, E40, F#40, G40, A40, B40, C41, D41, E41, F#41, G41, A41, B41, C42, D42, E42, F#42, G42, A42, B42, C43, D43, E43, F#43, G43, A43, B43, C44, D44, E44, F#44, G44, A44, B44, C45, D45, E45, F#45, G45, A45, B45, C46, D46, E46, F#46, G46, A46, B46, C47, D47, E47, F#47, G47, A47, B47, C48, D48, E48, F#48, G48, A48, B48, C49, D49, E49, F#49, G49, A49, B49, C50, D50, E50, F#50, G50, A50, B50, C51, D51, E51, F#51, G51, A51, B51, C52, D52, E52, F#52, G52, A52, B52, C53, D53, E53, F#53, G53, A53, B53, C54, D54, E54, F#54, G54, A54, B54, C55, D55, E55, F#55, G55, A55, B55, C56, D56, E56, F#56, G56, A56, B56, C57, D57, E57, F#57, G57, A57, B57, C58, D58, E58, F#58, G58, A58, B58, C59, D59, E59, F#59, G59, A59, B59, C60, D60, E60, F#60, G60, A60, B60, C61, D61, E61, F#61, G61, A61, B61, C62, D62, E62, F#62, G62, A62, B62, C63, D63, E63, F#63, G63, A63, B63, C64, D64, E64, F#64, G64, A64, B64, C65, D65, E65, F#65, G65, A65, B65, C66, D66, E66, F#66, G66, A66, B66, C67, D67, E67, F#67, G67, A67, B67, C68, D68, E68, F#68, G68, A68, B68, C69, D69, E69, F#69, G69, A69, B69, C70, D70, E70, F#70, G70, A70, B70, C71, D71, E71, F#71, G71, A71, B71, C72, D72, E72, F#72, G72, A72, B72, C73, D73, E73, F#73, G73, A73, B73, C74, D74, E74, F#74, G74, A74, B74, C75, D75, E75, F#75, G75, A75, B75, C76, D76, E76, F#76, G76, A76, B76, C77, D77, E77, F#77, G77, A77, B77, C78, D78, E78, F#78, G78, A78, B78, C79, D79, E79, F#79, G79, A79, B79, C80, D80, E80, F#80, G80, A80, B80, C81, D81, E81, F#81, G81, A81, B81, C82, D82, E82, F#82, G82, A82, B82, C83, D83, E83, F#83, G83, A83, B83, C84, D84, E84, F#84, G84, A84, B84, C85, D85, E85, F#85, G85, A85, B85, C86, D86, E86, F#86, G86, A86, B86, C87, D87, E87, F#87, G87, A87, B87, C88, D88, E88, F#88, G88, A88, B88, C89, D89, E89, F#89, G89, A89, B89, C90, D90, E90, F#90, G90, A90, B90, C91, D91, E91, F#91, G91, A91, B91, C92, D92, E92, F#92, G92, A92, B92, C93, D93, E93, F#93, G93, A93, B93, C94, D94, E94, F#94, G94, A94, B94, C95, D95, E95, F#95, G95, A95, B95, C96, D96, E96, F#96, G96, A96, B96, C97, D97, E97, F#97, G97, A97, B97, C98, D98, E98, F#98, G98, A98, B98, C99, D99, E99, F#99, G99, A99, B99, C100, D100, E100, F#100, G100, A100, B100, C101, D101, E101, F#101, G101, A101, B101, C102, D102, E102, F#102, G102, A102, B102, C103, D103, E103, F#103, G103, A103, B103, C104, D104, E104, F#104, G104, A104, B104, C105, D105, E105, F#105, G105, A105, B105, C106, D106, E106, F#106, G106, A106, B106, C107, D107, E107, F#107, G107, A107, B107, C108, D108, E108, F#108, G108, A108, B108, C109, D109, E109, F#109, G109, A109, B109, C110, D110, E110, F#110, G110, A110, B110, C111, D111, E111, F#111, G111, A111, B111, C112, D112, E112, F#112, G112, A112, B112, C113, D113, E113, F#113, G113, A113, B113, C114, D114, E114, F#114, G114, A114, B114, C115, D115, E115, F#115, G115, A115, B115, C116, D116, E116, F#116, G116, A116, B116, C117, D117, E117, F#117, G117, A117, B117, C118, D118, E118, F#118, G118, A118, B118, C119, D119, E119, F#119, G119, A119, B119, C120, D120, E120, F#120, G120, A120, B120, C121, D121, E121, F#121, G121, A121, B121, C122, D122, E122, F#122, G122, A122, B122, C123, D123, E123, F#123, G123, A123, B123, C124, D124, E124, F#124, G124, A124, B124, C125, D125, E125, F#125, G125, A125, B125, C126, D126, E126, F#126, G126, A126, B126, C127, D127, E127, F#127, G127, A127, B127, C128, D128, E128, F#128, G128, A128, B128, C129, D129, E129, F#129, G129, A129, B129, C130, D130, E130, F#130, G130, A130, B130, C131, D131, E131, F#131, G131, A131, B131, C132, D132, E132, F#132, G132, A132, B132, C133, D133, E133, F#133, G133, A133, B133, C134, D134, E134, F#134, G134, A134, B134, C135, D135, E135, F#135, G135, A135, B135, C136, D136, E136, F#136, G136, A136, B136, C137, D137, E137, F#137, G137, A137, B137, C138, D138, E138, F#138, G138, A138, B138, C139, D139, E139, F#139, G139, A139, B139, C140, D140, E140, F#140, G140, A140, B140, C141, D141, E141, F#141, G141, A141, B141, C142, D142, E142, F#142, G142, A142, B142, C143, D143, E143, F#143, G143, A143, B143, C144, D144, E144, F#144, G144, A144, B144, C145, D145, E145, F#145, G145, A145, B145, C146, D146, E146, F#146, G146, A146, B146, C147, D147, E147, F#147, G147, A147, B147, C148, D148, E148, F#148, G148, A148, B148, C149, D149, E149, F#149, G149, A149, B149, C150, D150, E150, F#150, G150, A150, B150, C151, D151, E151, F#151, G151, A151, B151, C152, D152, E152, F#152, G152, A152, B152, C153, D153, E153, F#153, G153, A153, B153, C154, D154, E154, F#154, G154, A154, B154, C155, D155, E155, F#155, G155, A155, B155, C156, D156, E156, F#156, G156, A156, B156, C157, D157, E157, F#157, G157, A157, B157, C158, D158, E158, F#158, G158, A158, B158, C159, D159, E159, F#159, G159, A159, B159, C160, D160, E160, F#160, G160, A160, B160, C161, D161, E161, F#161, G161, A161, B161, C162, D162, E162, F#162, G162, A162, B162, C163, D163, E163, F#163, G163, A163, B163, C164, D164, E164, F#164, G164, A164, B164, C165, D165, E165, F#165, G165, A165, B165, C166, D166, E166, F#166, G166, A166, B166, C167, D167, E167, F#167, G167, A167, B167, C168, D168, E168, F#168, G168, A168, B168, C169, D169, E169, F#169, G169, A169, B169, C170, D170, E170, F#170, G170, A170, B170, C171, D171, E171, F#171, G171, A171, B171, C172, D172, E172, F#172, G172, A172, B172, C173, D173, E173, F#173, G173, A173, B173, C174, D174, E174, F#174, G174, A174, B174, C175, D175, E175, F#175, G175, A175, B175, C176, D176, E176, F#176, G176, A176, B176, C177, D177, E177, F#177, G177, A177, B177, C178, D178, E178, F#178, G178, A178, B178, C179, D179, E179, F#179, G179, A179, B179, C180, D180, E180, F#180, G180, A180, B180, C181, D181, E181, F#181, G181, A181, B181, C182, D182, E182, F#182, G182, A182, B182, C183, D183, E183, F#183, G183, A183, B183, C184, D184, E184, F#184, G184, A184, B184, C185, D185, E185, F#185, G185, A185, B185, C186, D186, E186, F#186, G186, A186, B186, C187, D187, E187, F#187, G187, A187, B187, C188, D188, E188, F#188, G188, A188, B188, C189, D189, E189, F#189, G189, A189, B189, C190, D190, E190, F#190, G190, A190, B190, C191, D191, E191, F#191, G191, A191, B191, C192, D192, E192, F#192, G192, A192, B192, C193, D193, E193, F#193, G193, A193, B193, C194, D194, E194, F#194, G194, A194, B194, C195, D195, E195, F#195, G195, A195, B195, C196, D196, E196, F#196, G196, A196, B196, C197, D197, E197, F#197, G197, A197, B197, C198, D198, E198, F#198, G198, A198, B198, C199, D199, E199, F#199, G199, A199, B199, C200, D200, E200, F#200, G200, A200, B200, C201, D201, E201, F#201, G201, A201, B201, C202, D202, E202, F#202, G202, A202, B202, C203, D203, E203, F#203, G203, A203, B203, C204, D204, E204, F#204, G204, A204, B204, C205, D205, E205, F#205, G205, A205, B205, C206, D206, E206, F#206, G206, A206, B206, C207, D207, E207, F#207, G207, A207, B207, C208, D208, E208, F#208, G208, A208, B208, C209, D209, E209, F#209, G209, A209, B209, C210, D210, E210, F#210, G210, A210, B210, C211, D211, E211, F#211, G211, A211, B211, C212, D212, E212, F#212, G212, A212, B212, C213, D213, E213, F#213, G213, A213, B213, C214, D214, E214, F#214, G214, A214, B214, C215, D215, E215, F#215, G215, A215, B215, C216, D216, E216, F#216, G216, A216, B216, C217, D217, E217, F#217, G217, A217, B217, C218, D218, E218, F#218, G218, A218, B218, C219, D219, E219, F#219, G219, A219, B219, C220, D220, E220, F#220, G220, A220, B220, C221, D221, E221, F#221, G221, A221, B221, C222, D222, E222, F#222, G222, A222, B222, C223, D223, E223, F#223, G223, A223, B223, C224, D224, E224, F#224, G224, A224, B224, C225, D225, E225, F#225, G225, A225, B225, C226, D226, E226, F#226, G226, A226, B226, C227, D227, E227, F#227, G227, A227, B227, C228, D228, E228, F#228, G228, A228, B228, C229, D229, E229, F#229, G229, A229, B229, C230, D230, E230, F#230, G230, A230, B230, C231, D231, E231, F#231, G231, A231, B231, C232, D232, E232, F#232, G232, A232, B232, C233, D233, E233, F#233, G233, A233, B233, C234, D234, E234, F#234, G234, A234, B234, C235, D235, E235, F#235, G235, A235, B235, C236, D236, E236, F#236, G236, A236, B236, C237, D237, E237, F#237, G237, A237, B237, C238, D238, E238, F#238, G238, A238, B238, C239, D239, E239, F#239, G239, A239, B239, C240, D240, E240, F#240, G240, A240, B240, C241, D241, E241, F#241, G241, A241, B241, C242, D242, E242, F#242, G242, A242, B242, C243, D243, E243, F#243, G243, A243, B243, C244, D244, E244, F#244, G244, A244, B244, C245, D245, E245, F#245, G245, A245, B245, C246, D246, E246, F#246, G246, A246, B246, C247, D247, E247, F#247, G247, A247, B247, C248, D248, E248, F#248, G248, A248, B248, C249, D249, E249, F#249, G249, A249, B249, C250, D250, E250, F#250, G250, A250, B250, C251, D251, E251, F#251, G251, A251, B251, C252, D252, E252, F#252, G252, A252, B252, C253, D253, E253, F#253, G253, A253, B253, C254, D254, E254, F#254, G254, A254, B254, C255, D255, E255, F#255, G255, A255, B255, C256, D256, E256, F#256, G256, A256, B256, C257, D257, E257, F#257, G257, A257, B257, C258, D258, E258, F#258, G258, A258, B258, C259, D259, E259, F#259, G259, A259, B259, C260, D260, E260, F#260, G260, A260, B260, C261, D261, E261, F#261, G261, A261, B261, C262, D262, E262, F#262, G262, A262, B262, C263, D263, E263, F#263, G263, A263, B263, C264, D264, E264, F#264, G264, A264, B264, C265, D265, E265, F#265, G265, A265, B265, C266, D266, E266, F#266, G266, A266, B266, C267, D267, E267, F#267, G267, A267, B267, C268, D268, E268, F#268, G268, A268, B268, C269, D269, E269, F#269, G269, A269, B269, C270, D270, E270, F#270, G270, A270, B270, C271, D271, E271, F#271, G271, A271, B271, C272, D272, E272, F#272, G272, A272, B272, C273, D273, E273, F#273, G273, A273, B273, C274, D274, E274, F#274, G274, A274, B274, C275, D275, E275, F#275, G275, A275, B275, C276, D276, E276, F#276, G276, A276, B276, C277, D277, E277, F#277, G277, A277, B277, C278, D278, E278, F#278, G278, A278, B278, C279, D279, E279, F#279, G279, A279, B279, C280, D280, E280, F#280, G280, A280, B280, C281, D281, E281, F#281, G281, A281, B281, C282, D282, E282, F#282, G282, A282, B282, C283, D283, E283, F#283, G283, A283, B283, C284, D284, E284, F#284, G284, A284, B284, C285, D285, E285, F#285, G285, A285, B285, C286, D286, E286, F#286, G286, A286, B286, C287, D287, E287, F#287, G287, A287, B287, C288, D288, E288, F#288, G288, A288, B288, C289, D289, E289, F#289, G289, A289, B289, C290, D290, E290, F#290, G290, A290, B290, C291, D291, E291, F#291, G291, A291, B291, C292, D292, E292, F#292, G292, A292, B292, C293, D293, E293, F#293, G293, A293, B293, C294, D294, E294, F#294, G294, A294, B294, C295, D295, E295, F#295, G295, A295, B295, C296, D296, E296, F#296, G296, A296, B296, C297, D297, E297, F#297, G297, A297, B297, C298, D298, E298, F#298, G298, A298, B298, C299, D299, E299, F#299, G299, A299, B299, C300, D300, E300, F#300, G300, A300, B300, C301, D301, E301, F#301, G301, A301, B301, C302, D302, E302, F#302, G302, A302, B302, C303, D303, E303, F#303, G303, A303, B303, C304, D304, E304, F#304, G304, A304, B304, C305, D305, E305, F#305, G305, A305, B305, C306, D306, E306, F#306, G306, A306, B306, C307, D307, E307, F#307, G307, A307, B307, C308, D308, E308, F#308, G308, A308, B308, C309, D309, E309, F#309, G309, A309, B309, C310, D310, E310, F#310, G310, A310, B310, C311, D311, E311, F#311, G311, A311, B311, C312, D312, E312, F#312, G312, A312, B312, C313, D313, E313, F#313, G313, A313, B313, C314, D314, E314, F#314, G314, A314, B314, C315, D315, E315, F#315, G315, A315, B315, C316, D316, E316, F#316, G316, A316, B316, C317, D317, E317, F#317, G317, A317, B317, C318, D318, E318, F#318, G318, A318, B318, C319, D319, E319, F#319, G319, A319, B319, C320, D320, E320, F#320, G320, A320, B320, C321, D321, E321, F#321, G321, A321, B321, C322, D322, E322, F#322, G322, A322, B322, C323, D323, E323, F#323, G323, A323, B323, C324, D324, E324, F#324, G324, A324, B324, C325, D325, E325, F#325, G325, A325, B325, C326, D326, E326, F#326, G326, A326, B326, C327, D327, E327, F#327, G327, A327, B327, C328, D328, E328, F#328, G328, A328, B328, C329, D329, E329, F#329, G329, A329, B329, C330, D330, E330, F#330, G330, A330, B330, C331, D331, E331, F#331, G331, A331, B331, C332, D332, E332, F#332, G332, A332, B332, C333, D333, E333, F#333, G333, A333, B333, C334, D334, E334, F#334, G334, A334, B334, C335, D335, E335, F#335, G335, A335, B335, C336, D336, E336, F#336, G336, A336, B336, C337, D337, E337, F#337, G337, A337, B337, C338, D338, E338, F#338, G338, A338, B338, C339, D339, E339, F#339, G339, A339, B339, C340, D340, E340, F#340, G340, A340, B340, C341, D341, E341, F#341, G341, A341, B341, C342, D342, E342, F#342, G342, A342, B342, C343, D343, E343, F#343, G343, A343, B343, C344, D344, E344, F#344, G344, A344, B344, C345, D345, E345, F#345, G345, A345, B345, C346, D346, E346, F#346, G346, A346, B346, C347, D347, E347, F#347, G347, A347, B347, C348, D348, E348, F#348, G348, A348, B348, C349, D349, E349, F#349, G349, A349, B349, C350, D350, E350, F#350, G350, A350, B350, C351, D351, E351, F#351, G351, A351, B351, C352, D352, E352, F#352, G352, A352, B352, C353, D353, E353, F#353, G353, A353, B353, C354, D354, E354, F#354, G354, A354, B354, C355, D355, E355, F#355, G355, A355, B355, C356, D356, E356, F#356, G356, A356, B356, C357, D357, E357, F#357, G357, A357, B357, C358, D358, E358, F#358, G358, A358, B358, C359, D359, E359, F#359, G359, A359, B359, C360, D360, E360, F#360, G360, A360, B360, C361, D361, E361, F#361, G361, A361, B361, C362, D362, E362, F#362, G362, A362, B362, C363, D363, E363, F#363, G363, A363, B363, C364, D364, E364, F#364, G364, A364, B364, C365, D365,

313 **79** **80**

Two measures of music in 3/4 time. Measure 79 contains a sequence of eighth notes: G4, A4, B4, C5, D5, E5, F5, G5. Measure 80 contains a sequence of eighth notes: G4, F4, E4, D4, C4, B3, A3, G3.

321 **81** **82**

Two measures of music in 3/4 time. Measure 81 contains a sequence of eighth notes: G4, A4, B4, C5, D5, E5, F5, G5. Measure 82 contains a sequence of eighth notes: G4, F4, E4, D4, C4, B3, A3, G3.

329 **83** **84**

Two measures of music in 3/4 time. Measure 83 contains a sequence of eighth notes: G4, A4, B4, C5, D5, E5, F5, G5. Measure 84 contains a sequence of eighth notes: G4, F4, E4, D4, C4, B3, A3, G3.

337 **85** **86** Blue

Two measures of music in 3/4 time. Measure 85 contains a sequence of eighth notes: G4, A4, B4, C5, D5, E5, F5, G5. Measure 86 contains a sequence of eighth notes: G4, F4, E4, D4, C4, B3, A3, G3.

345 **87**

One measure of music in 3/4 time. Measure 87 contains a sequence of eighth notes: G4, A4, B4, C5, D5, E5, F5, G5.

349 **88** **89**

Two measures of music in 3/4 time. Measure 88 contains a sequence of eighth notes: G4, A4, B4, C5, D5, E5, F5, G5. Measure 89 contains a sequence of eighth notes: G4, F4, E4, D4, C4, B3, A3, G3.

357 **90** **91**

Two measures of music in 3/4 time. Measure 90 contains a sequence of eighth notes: G4, A4, B4, C5, D5, E5, F5, G5. Measure 91 contains a sequence of eighth notes: G4, F4, E4, D4, C4, B3, A3, G3.

365 **92** **93**

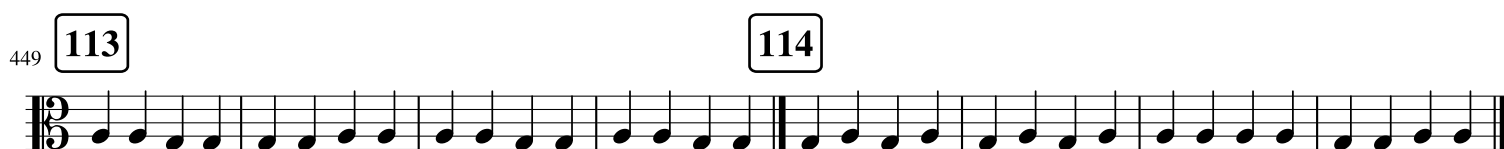
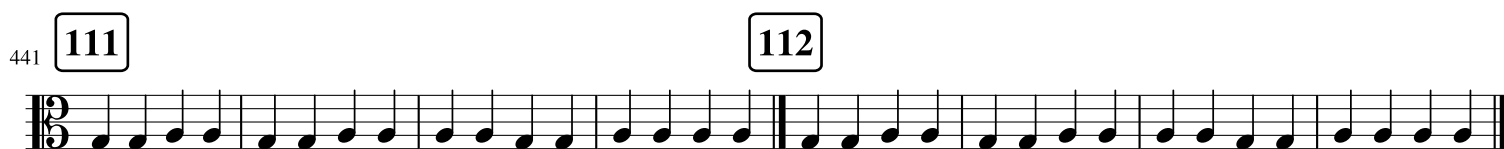
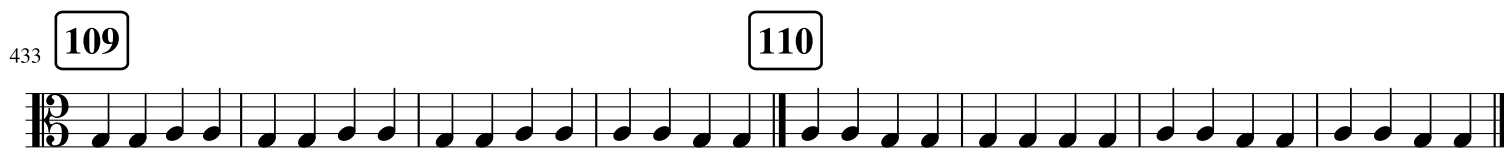
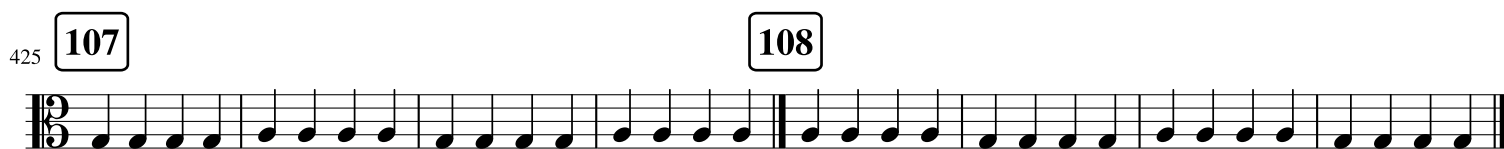
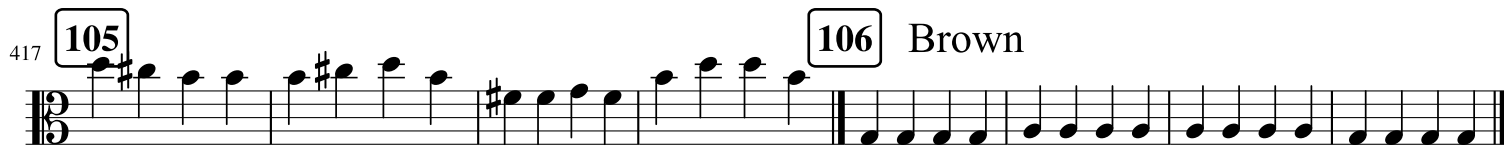
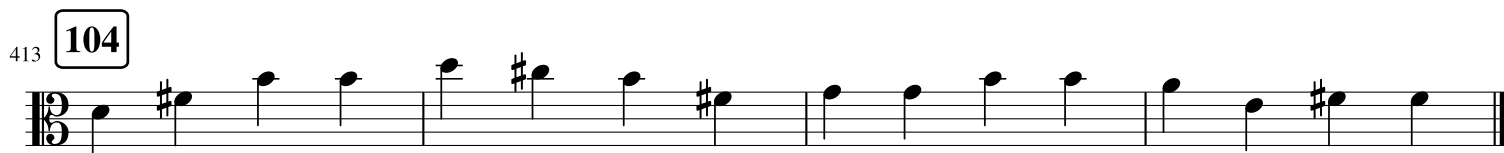
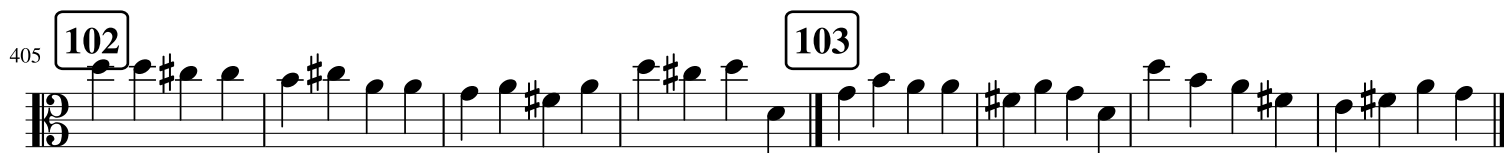
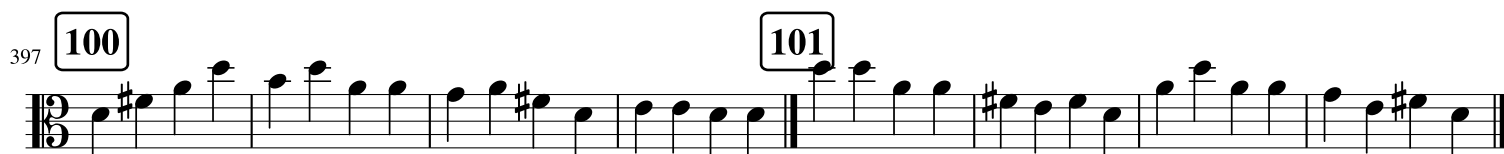
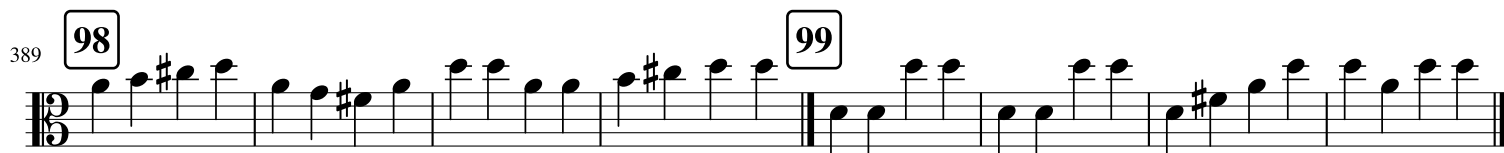
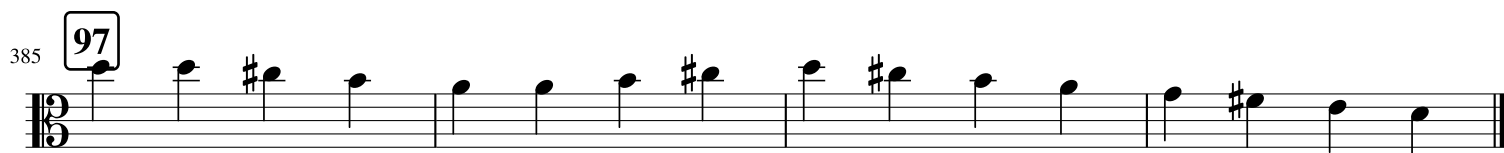
Two measures of music in 3/4 time. Measure 92 contains a sequence of eighth notes: G4, A4, B4, C5, D5, E5, F5, G5. Measure 93 contains a sequence of eighth notes: G4, F4, E4, D4, C4, B3, A3, G3.

373 **94** **95**

Two measures of music in 3/4 time. Measure 94 contains a sequence of eighth notes: G4, A4, B4, C5, D5, E5, F5, G5. Measure 95 contains a sequence of eighth notes: G4, F4, E4, D4, C4, B3, A3, G3.

381 **96** Purple

One measure of music in 3/4 time. Measure 96 contains a sequence of eighth notes: G4, A4, B4, C5, D5, E5, F5, G5.



457 **115** **116**

Handwritten musical notation for measures 115 and 116. The staff is in 2/4 time, with a key signature of one flat (B-flat). The melody consists of eighth notes, with a repeat sign at the end of measure 116.

465 **117** **118**

Handwritten musical notation for measures 117 and 118. The staff is in 2/4 time, with a key signature of one flat (B-flat). The melody consists of eighth notes, with a repeat sign at the end of measure 118.

473 **119** **120**

Handwritten musical notation for measures 119 and 120. The staff is in 2/4 time, with a key signature of one flat (B-flat). The melody consists of eighth notes, with a repeat sign at the end of measure 120.

481 **121** **122**

Handwritten musical notation for measures 121 and 122. The staff is in 2/4 time, with a key signature of one flat (B-flat). The melody consists of eighth notes, with a repeat sign at the end of measure 122.

489 **123** **124**

Handwritten musical notation for measures 123 and 124. The staff is in 2/4 time, with a key signature of one flat (B-flat). The melody consists of eighth notes, with a repeat sign at the end of measure 124.

497 **125** **126** Red

Handwritten musical notation for measures 125 and 126. The staff is in 2/4 time, with a key signature of one flat (B-flat). The melody consists of eighth notes, with a repeat sign at the end of measure 126. The word "Red" is written to the right of measure 126.

505 **127** **128**

Handwritten musical notation for measures 127 and 128. The staff is in 2/4 time, with a key signature of one flat (B-flat). The melody consists of eighth notes, with a repeat sign at the end of measure 128.

513 **129** **130**

Handwritten musical notation for measures 129 and 130. The staff is in 2/4 time, with a key signature of one flat (B-flat). The melody consists of eighth notes, with a repeat sign at the end of measure 130.

521 **131** **132**

Handwritten musical notation for measures 131 and 132. The staff is in 2/4 time, with a key signature of one flat (B-flat). The melody consists of eighth notes, with a repeat sign at the end of measure 132.

529 **133** **134**

Handwritten musical notation for measures 133 and 134. The staff is in 2/4 time, with a key signature of one flat (B-flat). The melody consists of eighth notes, with a repeat sign at the end of measure 134.

537 **135** **136**

Staff 135-136: Treble clef, 2/4 time. Staff 135 (measures 537-544) contains eighth notes: G4, A4, B4, C5, D5, E5, F5, G5, A5, B5, C6, D6, E6, F6, G6, A6, B6, C7. Staff 136 (measures 545-552) contains eighth notes: G5, A5, B5, C6, D6, E6, F6, G6, A6, B6, C7, D7, E7, F7, G7, A7, B7, C8.

545 **137** **138**

Staff 137-138: Treble clef, 2/4 time. Staff 137 (measures 545-552) contains eighth notes: G5, A5, B5, C6, D6, E6, F6, G6, A6, B6, C7, D7, E7, F7, G7, A7, B7, C8. Staff 138 (measures 553-560) contains eighth notes: G5, A5, B5, C6, D6, E6, F6, G6, A6, B6, C7, D7, E7, F7, G7, A7, B7, C8.

553 **139** **140**

Staff 139-140: Treble clef, 2/4 time. Staff 139 (measures 553-560) contains eighth notes: G5, A5, B5, C6, D6, E6, F6, G6, A6, B6, C7, D7, E7, F7, G7, A7, B7, C8. Staff 140 (measures 561-568) contains eighth notes: G5, A5, B5, C6, D6, E6, F6, G6, A6, B6, C7, D7, E7, F7, G7, A7, B7, C8.

561 **141** **142**

Staff 141-142: Treble clef, 2/4 time. Staff 141 (measures 561-568) contains eighth notes: G5, A5, B5, C6, D6, E6, F6, G6, A6, B6, C7, D7, E7, F7, G7, A7, B7, C8. Staff 142 (measures 569-576) contains eighth notes: G5, A5, B5, C6, D6, E6, F6, G6, A6, B6, C7, D7, E7, F7, G7, A7, B7, C8.

569 **143** **144**

Staff 143-144: Treble clef, 2/4 time. Staff 143 (measures 569-576) contains eighth notes: G5, A5, B5, C6, D6, E6, F6, G6, A6, B6, C7, D7, E7, F7, G7, A7, B7, C8. Staff 144 (measures 577-584) contains eighth notes: G5, A5, B5, C6, D6, E6, F6, G6, A6, B6, C7, D7, E7, F7, G7, A7, B7, C8.

577 **145** **146** Black

Staff 145-146: Treble clef, 2/4 time. Staff 145 (measures 577-584) contains eighth notes: G5, A5, B5, C6, D6, E6, F6, G6, A6, B6, C7, D7, E7, F7, G7, A7, B7, C8. Staff 146 (measures 585-592) contains eighth notes: G5, A5, B5, C6, D6, E6, F6, G6, A6, B6, C7, D7, E7, F7, G7, A7, B7, C8.

585 **147** **148**

Staff 147-148: Treble clef, 2/4 time. Staff 147 (measures 585-592) contains eighth notes: G5, A5, B5, C6, D6, E6, F6, G6, A6, B6, C7, D7, E7, F7, G7, A7, B7, C8. Staff 148 (measures 593-600) contains eighth notes: G5, A5, B5, C6, D6, E6, F6, G6, A6, B6, C7, D7, E7, F7, G7, A7, B7, C8.

593 **149** **150**

Staff 149-150: Treble clef, 2/4 time. Staff 149 (measures 593-600) contains eighth notes: G5, A5, B5, C6, D6, E6, F6, G6, A6, B6, C7, D7, E7, F7, G7, A7, B7, C8. Staff 150 (measures 601-608) contains eighth notes: G5, A5, B5, C6, D6, E6, F6, G6, A6, B6, C7, D7, E7, F7, G7, A7, B7, C8.

601 **151** **152**

Staff 151-152: Treble clef, 2/4 time. Staff 151 (measures 601-608) contains eighth notes: G5, A5, B5, C6, D6, E6, F6, G6, A6, B6, C7, D7, E7, F7, G7, A7, B7, C8. Staff 152 (measures 609-616) contains eighth notes: G5, A5, B5, C6, D6, E6, F6, G6, A6, B6, C7, D7, E7, F7, G7, A7, B7, C8.

609 **153** **154**

Staff 153-154: Treble clef, 2/4 time. Staff 153 (measures 609-616) contains eighth notes: G5, A5, B5, C6, D6, E6, F6, G6, A6, B6, C7, D7, E7, F7, G7, A7, B7, C8. Staff 154 (measures 617-624) contains eighth notes: G5, A5, B5, C6, D6, E6, F6, G6, A6, B6, C7, D7, E7, F7, G7, A7, B7, C8.

617 **155** **156**

Musical notation for measures 155 and 156. Measure 155 contains four measures of music, and measure 156 contains four measures. The notation is in 9/8 time with a key signature of one flat. Measure 155 ends with a double bar line.

625 **157** **158**

Musical notation for measures 157 and 158. Measure 157 contains four measures of music, and measure 158 contains four measures. The notation is in 9/8 time with a key signature of one flat. Measure 157 ends with a double bar line.

633 **159** **160**

Musical notation for measures 159 and 160. Measure 159 contains four measures of music, and measure 160 contains four measures. The notation is in 9/8 time with a key signature of one flat. Measure 159 ends with a double bar line.

641 **161** **162**

Musical notation for measures 161 and 162. Measure 161 contains four measures of music, and measure 162 contains four measures. The notation is in 9/8 time with a key signature of one flat. Measure 161 ends with a double bar line.

649 **163** **164**

Musical notation for measures 163 and 164. Measure 163 contains four measures of music, and measure 164 contains four measures. The notation is in 9/8 time with a key signature of one flat. Measure 163 ends with a double bar line.

657 **165** **166**

Musical notation for measures 165 and 166. Measure 165 contains four measures of music, and measure 166 contains four measures. The notation is in 9/8 time with a key signature of one flat. Measure 165 ends with a double bar line.

665 **167** **168**

Musical notation for measures 167 and 168. Measure 167 contains four measures of music, and measure 168 contains four measures. The notation is in 9/8 time with a key signature of one flat. Measure 167 ends with a double bar line.

673 **169** **170**

Musical notation for measures 169 and 170. Measure 169 contains four measures of music, and measure 170 contains four measures. The notation is in 9/8 time with a key signature of one flat. Measure 169 ends with a double bar line.

Viola

Reading

Pitch

White 1

2



9 3

4



17 5

6



25 7

8



33 9

10



41 11 Yellow

12



49 13

14



57 15

16



65 17

18



73

19

20



81

21

22



89

23

24



97

25

26



105

27

28



113

29

30



121

31

32



129

33

34



137

35

36



145

37

38



153 **39** **40**

Handwritten musical notation for measures 39 and 40. The staff is in bass clef with a key signature of one sharp (F#). Measure 39 contains eight eighth notes: F2, G2, A2, B2, C3, D3, E3, F#3. Measure 40 contains eight eighth notes: G2, A2, B2, C3, D3, E3, F#3, G3. The staff ends with a double bar line.

161 **41** **42**

Handwritten musical notation for measures 41 and 42. The staff is in bass clef with a key signature of one sharp (F#). Measure 41 contains eight eighth notes: G2, A2, B2, C3, D3, E3, F#3, G3. Measure 42 contains eight eighth notes: A2, B2, C3, D3, E3, F#3, G3, A3. The staff ends with a double bar line.

169 **43** **44**

Handwritten musical notation for measures 43 and 44. The staff is in bass clef with a key signature of one sharp (F#). Measure 43 contains eight eighth notes: B2, C3, D3, E3, F#3, G3, A3, B3. Measure 44 contains eight eighth notes: C3, D3, E3, F#3, G3, A3, B3, C4. The staff ends with a double bar line.

177 **45** **46**

Handwritten musical notation for measures 45 and 46. The staff is in bass clef with a key signature of one sharp (F#). Measure 45 contains eight eighth notes: D3, E3, F#3, G3, A3, B3, C4, D4. Measure 46 contains eight eighth notes: E3, F#3, G3, A3, B3, C4, D4, E4. The staff ends with a double bar line.

185 **47** **48**

Handwritten musical notation for measures 47 and 48. The staff is in bass clef with a key signature of one sharp (F#). Measure 47 contains eight eighth notes: F#3, G3, A3, B3, C4, D4, E4, F#4. Measure 48 contains eight eighth notes: G3, A3, B3, C4, D4, E4, F#4, G4. The staff ends with a double bar line.

193 **49** **50**

Handwritten musical notation for measures 49 and 50. The staff is in bass clef with a key signature of one sharp (F#). Measure 49 contains eight eighth notes: A3, B3, C4, D4, E4, F#4, G4, A4. Measure 50 contains eight eighth notes: B3, C4, D4, E4, F#4, G4, A4, B4. The staff ends with a double bar line.

201 **51** Orange **52**

Handwritten musical notation for measures 51 and 52. The staff is in bass clef with a key signature of one sharp (F#). Measure 51 contains eight eighth notes: C4, D4, E4, F#4, G4, A4, B4, C5. Measure 52 contains eight eighth notes: D4, E4, F#4, G4, A4, B4, C5, D5. The staff ends with a double bar line.

209 **53** **54**

Handwritten musical notation for measures 53 and 54. The staff is in bass clef with a key signature of one sharp (F#). Measure 53 contains eight eighth notes: E4, F#4, G4, A4, B4, C5, D5, E5. Measure 54 contains eight eighth notes: F#4, G4, A4, B4, C5, D5, E5, F#5. The staff ends with a double bar line.

217 **55** **56**

Handwritten musical notation for measures 55 and 56. The staff is in bass clef with a key signature of one sharp (F#). Measure 55 contains eight eighth notes: G4, A4, B4, C5, D5, E5, F#5, G5. Measure 56 contains eight eighth notes: A4, B4, C5, D5, E5, F#5, G5, A5. The staff ends with a double bar line.

225 **57** **58**

Handwritten musical notation for measures 57 and 58. The staff is in bass clef with a key signature of one sharp (F#). Measure 57 contains eight eighth notes: B4, C5, D5, E5, F#5, G5, A5, B5. Measure 58 contains eight eighth notes: C5, D5, E5, F#5, G5, A5, B5, C6. The staff ends with a double bar line.

233 **59** **60**

Handwritten musical notation for measures 59 and 60. The staff is in 2/4 time with a key signature of one sharp (F#). Measure 59 contains the notes G4, A4, B4, C5, D5, E5, F#5, G5, A5, B5, C6, D6, E6, F#6, G6, A6, B6, C7. Measure 60 contains the notes D7, E7, F#7, G7, A7, B7, C8, D8, E8, F#8, G8, A8, B8, C9, D9, E9, F#9, G9.

241 **61** **62**

Handwritten musical notation for measures 61 and 62. Measure 61 contains the notes G4, A4, B4, C5, D5, E5, F#5, G5, A5, B5, C6, D6, E6, F#6, G6, A6, B6, C7. Measure 62 contains the notes D7, E7, F#7, G7, A7, B7, C8, D8, E8, F#8, G8, A8, B8, C9, D9, E9, F#9, G9.

249 **63** **64**

Handwritten musical notation for measures 63 and 64. Measure 63 contains the notes G4, A4, B4, C5, D5, E5, F#5, G5, A5, B5, C6, D6, E6, F#6, G6, A6, B6, C7. Measure 64 contains the notes D7, E7, F#7, G7, A7, B7, C8, D8, E8, F#8, G8, A8, B8, C9, D9, E9, F#9, G9.

257 **65** **66**

Handwritten musical notation for measures 65 and 66. Measure 65 contains the notes G4, A4, B4, C5, D5, E5, F#5, G5, A5, B5, C6, D6, E6, F#6, G6, A6, B6, C7. Measure 66 contains the notes D7, E7, F#7, G7, A7, B7, C8, D8, E8, F#8, G8, A8, B8, C9, D9, E9, F#9, G9.

265 **67** **68**

Handwritten musical notation for measures 67 and 68. Measure 67 contains the notes G4, A4, B4, C5, D5, E5, F#5, G5, A5, B5, C6, D6, E6, F#6, G6, A6, B6, C7. Measure 68 contains the notes D7, E7, F#7, G7, A7, B7, C8, D8, E8, F#8, G8, A8, B8, C9, D9, E9, F#9, G9.

273 **69** **70**

Handwritten musical notation for measures 69 and 70. Measure 69 contains the notes G4, A4, B4, C5, D5, E5, F#5, G5, A5, B5, C6, D6, E6, F#6, G6, A6, B6, C7. Measure 70 contains the notes D7, E7, F#7, G7, A7, B7, C8, D8, E8, F#8, G8, A8, B8, C9, D9, E9, F#9, G9.

281 **71** Green **72**

Handwritten musical notation for measures 71 and 72. Measure 71 contains the notes G4, A4, B4, C5, D5, E5, F#5, G5, A5, B5, C6, D6, E6, F#6, G6, A6, B6, C7. Measure 72 contains the notes D7, E7, F#7, G7, A7, B7, C8, D8, E8, F#8, G8, A8, B8, C9, D9, E9, F#9, G9.

289 **73** **74**

Handwritten musical notation for measures 73 and 74. Measure 73 contains the notes G4, A4, B4, C5, D5, E5, F#5, G5, A5, B5, C6, D6, E6, F#6, G6, A6, B6, C7. Measure 74 contains the notes D7, E7, F#7, G7, A7, B7, C8, D8, E8, F#8, G8, A8, B8, C9, D9, E9, F#9, G9.

297 **75** **76**

Handwritten musical notation for measures 75 and 76. Measure 75 contains the notes G4, A4, B4, C5, D5, E5, F#5, G5, A5, B5, C6, D6, E6, F#6, G6, A6, B6, C7. Measure 76 contains the notes D7, E7, F#7, G7, A7, B7, C8, D8, E8, F#8, G8, A8, B8, C9, D9, E9, F#9, G9.

305 **77** **78**

Handwritten musical notation for measures 77 and 78. Measure 77 contains the notes G4, A4, B4, C5, D5, E5, F#5, G5, A5, B5, C6, D6, E6, F#6, G6, A6, B6, C7. Measure 78 contains the notes D7, E7, F#7, G7, A7, B7, C8, D8, E8, F#8, G8, A8, B8, C9, D9, E9, F#9, G9.

313 **79** **80**

Staff 79-80: A musical staff in 2/4 time with a key signature of one sharp (F#). It contains measures 79 and 80. Measure 79 consists of eight eighth notes: F4, G4, A4, B4, C5, B4, A4, G4. Measure 80 consists of eight eighth notes: F4, E4, D4, C4, B3, A3, G3, F3.

321 **81** **82**

Staff 81-82: A musical staff in 2/4 time with a key signature of one sharp (F#). It contains measures 81 and 82. Measure 81 consists of eight eighth notes: F4, G4, A4, B4, C5, B4, A4, G4. Measure 82 consists of eight eighth notes: F4, E4, D4, C4, B3, A3, G3, F3.

329 **83** **84**

Staff 83-84: A musical staff in 2/4 time with a key signature of one sharp (F#). It contains measures 83 and 84. Measure 83 consists of eight eighth notes: F4, G4, A4, B4, C5, B4, A4, G4. Measure 84 consists of eight eighth notes: F4, E4, D4, C4, B3, A3, G3, F3.

337 **85** **86** Blue

Staff 85-86: A musical staff in 2/4 time with a key signature of one sharp (F#). It contains measures 85 and 86. Measure 85 consists of eight eighth notes: F4, G4, A4, B4, C5, B4, A4, G4. Measure 86 consists of eight eighth notes: F4, E4, D4, C4, B3, A3, G3, F3.

345 **87**

Staff 87: A musical staff in 2/4 time with a key signature of one sharp (F#). It contains measure 87. Measure 87 consists of eight eighth notes: F4, G4, A4, B4, C5, B4, A4, G4.

349 **88** **89**

Staff 88-89: A musical staff in 2/4 time with a key signature of one sharp (F#). It contains measures 88 and 89. Measure 88 consists of eight eighth notes: F4, G4, A4, B4, C5, B4, A4, G4. Measure 89 consists of eight eighth notes: F4, E4, D4, C4, B3, A3, G3, F3.

357 **90** **91**

Staff 90-91: A musical staff in 2/4 time with a key signature of one sharp (F#). It contains measures 90 and 91. Measure 90 consists of eight eighth notes: F4, G4, A4, B4, C5, B4, A4, G4. Measure 91 consists of eight eighth notes: F4, E4, D4, C4, B3, A3, G3, F3.

365 **92** **93**

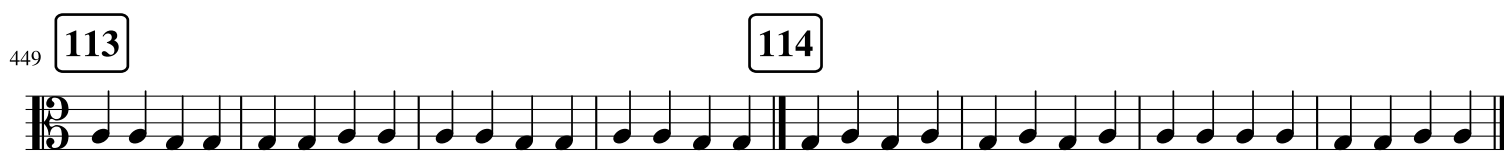
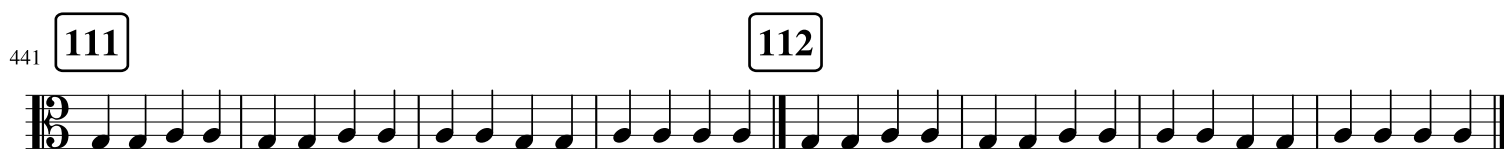
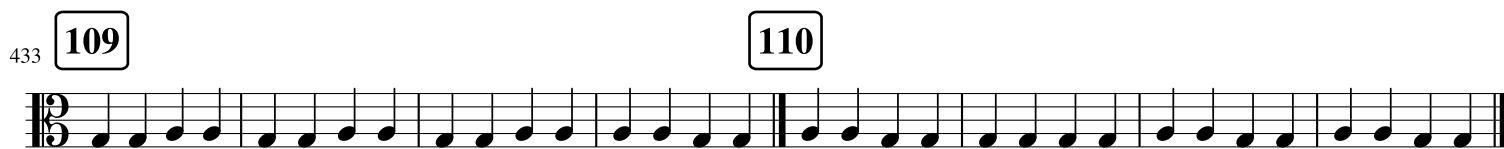
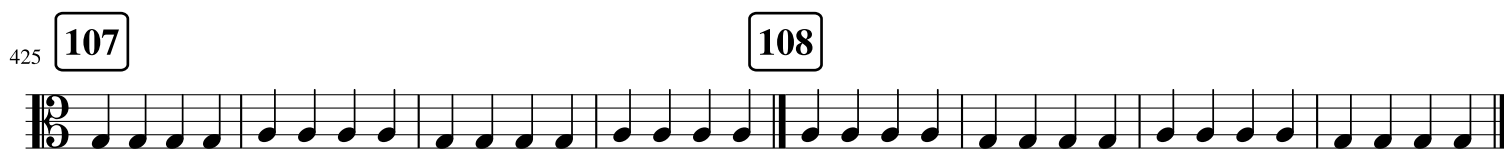
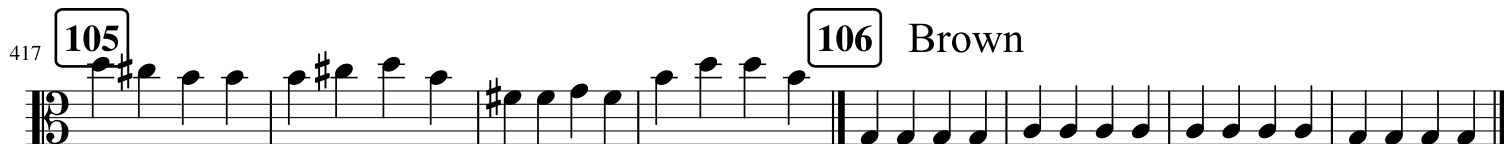
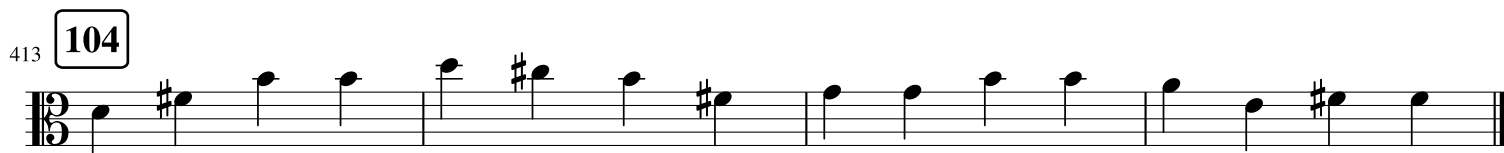
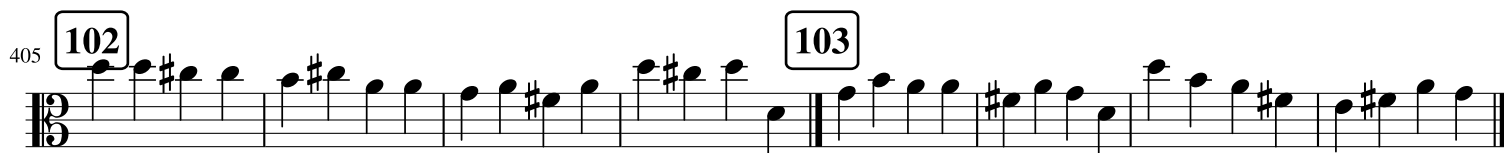
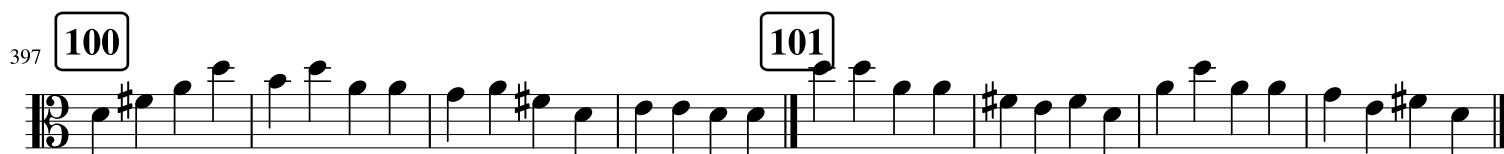
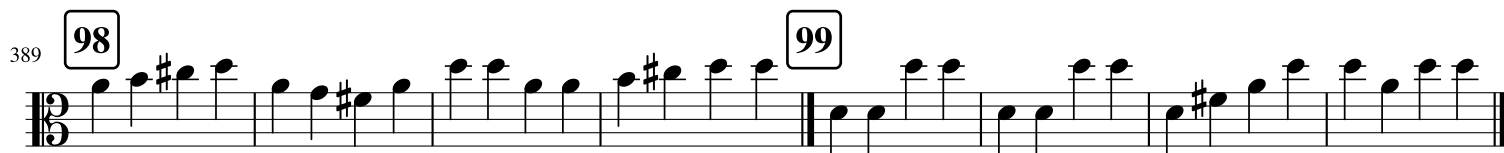
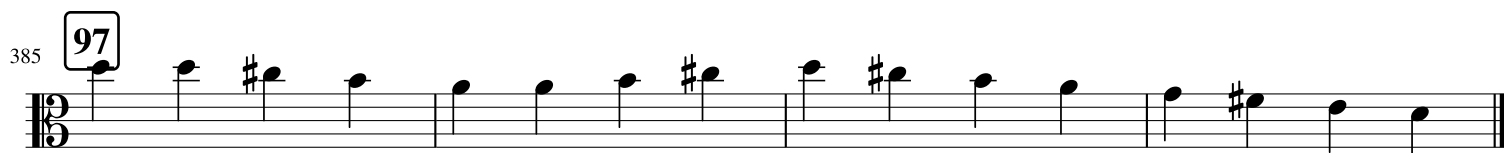
Staff 92-93: A musical staff in 2/4 time with a key signature of one sharp (F#). It contains measures 92 and 93. Measure 92 consists of eight eighth notes: F4, G4, A4, B4, C5, B4, A4, G4. Measure 93 consists of eight eighth notes: F4, E4, D4, C4, B3, A3, G3, F3.

373 **94** **95**

Staff 94-95: A musical staff in 2/4 time with a key signature of one sharp (F#). It contains measures 94 and 95. Measure 94 consists of eight eighth notes: F4, G4, A4, B4, C5, B4, A4, G4. Measure 95 consists of eight eighth notes: F4, E4, D4, C4, B3, A3, G3, F3.

381 **96** Purple

Staff 96: A musical staff in 2/4 time with a key signature of one sharp (F#). It contains measure 96. Measure 96 consists of eight eighth notes: F4, G4, A4, B4, C5, B4, A4, G4.



529 133 134



530

537 **135** **136**

Staff 135-136: Treble clef, 2/4 time. Staff 135 (measures 537-544) contains eighth notes: G4, A4, B4, C5, D5, E5, F5, G5, A5, B5, C6, D6, E6, F6, G6, A6, B6, C7. Staff 136 (measures 545-552) contains eighth notes: G5, A5, B5, C6, D6, E6, F6, G6, A6, B6, C7, D7, E7, F7, G7, A7, B7, C8.

545 **137** **138**

Staff 137-138: Treble clef, 2/4 time. Staff 137 (measures 545-552) contains eighth notes: G5, A5, B5, C6, D6, E6, F6, G6, A6, B6, C7, D7, E7, F7, G7, A7, B7, C8. Staff 138 (measures 553-560) contains eighth notes: G5, A5, B5, C6, D6, E6, F6, G6, A6, B6, C7, D7, E7, F7, G7, A7, B7, C8.

553 **139** **140**

Staff 139-140: Treble clef, 2/4 time. Staff 139 (measures 553-560) contains eighth notes: G5, A5, B5, C6, D6, E6, F6, G6, A6, B6, C7, D7, E7, F7, G7, A7, B7, C8. Staff 140 (measures 561-568) contains eighth notes: G5, A5, B5, C6, D6, E6, F6, G6, A6, B6, C7, D7, E7, F7, G7, A7, B7, C8.

561 **141** **142**

Staff 141-142: Treble clef, 2/4 time. Staff 141 (measures 561-568) contains eighth notes: G5, A5, B5, C6, D6, E6, F6, G6, A6, B6, C7, D7, E7, F7, G7, A7, B7, C8. Staff 142 (measures 569-576) contains eighth notes: G5, A5, B5, C6, D6, E6, F6, G6, A6, B6, C7, D7, E7, F7, G7, A7, B7, C8.

569 **143** **144**

Staff 143-144: Treble clef, 2/4 time. Staff 143 (measures 569-576) contains eighth notes: G5, A5, B5, C6, D6, E6, F6, G6, A6, B6, C7, D7, E7, F7, G7, A7, B7, C8. Staff 144 (measures 577-584) contains eighth notes: G5, A5, B5, C6, D6, E6, F6, G6, A6, B6, C7, D7, E7, F7, G7, A7, B7, C8.

577 **145** **146** Black

Staff 145-146: Treble clef, 2/4 time. Staff 145 (measures 577-584) contains eighth notes: G5, A5, B5, C6, D6, E6, F6, G6, A6, B6, C7, D7, E7, F7, G7, A7, B7, C8. Staff 146 (measures 585-592) contains eighth notes: G5, A5, B5, C6, D6, E6, F6, G6, A6, B6, C7, D7, E7, F7, G7, A7, B7, C8.

585 **147** **148**

Staff 147-148: Treble clef, 2/4 time. Staff 147 (measures 585-592) contains eighth notes: G5, A5, B5, C6, D6, E6, F6, G6, A6, B6, C7, D7, E7, F7, G7, A7, B7, C8. Staff 148 (measures 593-600) contains eighth notes: G5, A5, B5, C6, D6, E6, F6, G6, A6, B6, C7, D7, E7, F7, G7, A7, B7, C8.

593 **149** **150**

Staff 149-150: Treble clef, 2/4 time. Staff 149 (measures 593-600) contains eighth notes: G5, A5, B5, C6, D6, E6, F6, G6, A6, B6, C7, D7, E7, F7, G7, A7, B7, C8. Staff 150 (measures 601-608) contains eighth notes: G5, A5, B5, C6, D6, E6, F6, G6, A6, B6, C7, D7, E7, F7, G7, A7, B7, C8.

601 **151** **152**

Staff 151-152: Treble clef, 2/4 time. Staff 151 (measures 601-608) contains eighth notes: G5, A5, B5, C6, D6, E6, F6, G6, A6, B6, C7, D7, E7, F7, G7, A7, B7, C8. Staff 152 (measures 609-616) contains eighth notes: G5, A5, B5, C6, D6, E6, F6, G6, A6, B6, C7, D7, E7, F7, G7, A7, B7, C8.

609 **153** **154**

Staff 153-154: Treble clef, 2/4 time. Staff 153 (measures 609-616) contains eighth notes: G5, A5, B5, C6, D6, E6, F6, G6, A6, B6, C7, D7, E7, F7, G7, A7, B7, C8. Staff 154 (measures 617-624) contains eighth notes: G5, A5, B5, C6, D6, E6, F6, G6, A6, B6, C7, D7, E7, F7, G7, A7, B7, C8.

617 **155** **156**

Handwritten musical notation for measures 155 and 156. The staff is in 2/4 time, starting with a treble clef and a key signature of one flat (B-flat). Measure 155 contains a sequence of eighth notes: G4, A4, B4, A4, G4, F4, E4, D4. Measure 156 contains a sequence of eighth notes: C4, D4, E4, F4, G4, A4, B4, C5. The piece ends with a double bar line.

625 **157** **158**

Handwritten musical notation for measures 157 and 158. The staff is in 2/4 time, starting with a treble clef and a key signature of one flat (B-flat). Measure 157 contains a sequence of eighth notes: G4, A4, B4, A4, G4, F4, E4, D4. Measure 158 contains a sequence of eighth notes: C4, D4, E4, F4, G4, A4, B4, C5. The piece ends with a double bar line.

633 **159** **160**

Handwritten musical notation for measures 159 and 160. The staff is in 2/4 time, starting with a treble clef and a key signature of one flat (B-flat). Measure 159 contains a sequence of eighth notes: G4, A4, B4, A4, G4, F4, E4, D4. Measure 160 contains a sequence of eighth notes: C4, D4, E4, F4, G4, A4, B4, C5. The piece ends with a double bar line.

641 **161** **162**

Handwritten musical notation for measures 161 and 162. The staff is in 2/4 time, starting with a treble clef and a key signature of one flat (B-flat). Measure 161 contains a sequence of eighth notes: G4, A4, B4, A4, G4, F4, E4, D4. Measure 162 contains a sequence of eighth notes: C4, D4, E4, F4, G4, A4, B4, C5. The piece ends with a double bar line.

649 **163** **164**

Handwritten musical notation for measures 163 and 164. The staff is in 2/4 time, starting with a treble clef and a key signature of one flat (B-flat). Measure 163 contains a sequence of eighth notes: G4, A4, B4, A4, G4, F4, E4, D4. Measure 164 contains a sequence of eighth notes: C4, D4, E4, F4, G4, A4, B4, C5. The piece ends with a double bar line.

657 **165** **166**

Handwritten musical notation for measures 165 and 166. The staff is in 2/4 time, starting with a treble clef and a key signature of one flat (B-flat). Measure 165 contains a sequence of eighth notes: G4, A4, B4, A4, G4, F4, E4, D4. Measure 166 contains a sequence of eighth notes: C4, D4, E4, F4, G4, A4, B4, C5. The piece ends with a double bar line.

665 **167** **168**

Handwritten musical notation for measures 167 and 168. The staff is in 2/4 time, starting with a treble clef and a key signature of one flat (B-flat). Measure 167 contains a sequence of eighth notes: G4, A4, B4, A4, G4, F4, E4, D4. Measure 168 contains a sequence of eighth notes: C4, D4, E4, F4, G4, A4, B4, C5. The piece ends with a double bar line.

673 **169** **170**

Handwritten musical notation for measures 169 and 170. The staff is in 2/4 time, starting with a treble clef and a key signature of one flat (B-flat). Measure 169 contains a sequence of eighth notes: G4, A4, B4, A4, G4, F4, E4, D4. Measure 170 contains a sequence of eighth notes: C4, D4, E4, F4, G4, A4, B4, C5. The piece ends with a double bar line.

Rhythm Karate

1 White

2

8

3

15

4

22

5

29

6

36

7

41

8

46

9

51

10

56

11

61

65 **12** **13**

73 **14** **15**

81 **16** **17**

87 **18** **19**

93 **20** **21** Yellow

103 **22** **23**

117 **24** **25**

131 **26** **27**

141 **28** **29**

151 **30** **31**

160 **32** **33**

168 **34** **35**

176 **36** **37**

182 **38** **39**

188 **40** **41** Gold

196 **42** **43**

206 **44** **45**

216 **46** **47**

224 **48** **49**

232 **50** **51**

239 **52** **53**

245 **54** **55**

251 **56** **57**

257 **58** **59**

263 **60** **61** Orange

270 **62** **63**

278 **64** **65**

286 **66** **67**

294 **68** **69**

302 **70** **71** Green

311 **72** **73**

321 **74** **75**

331 **76** **77**

339 **78** **79**

347 **80** **81**

354 **82** **83**

360 **84** **85**

366 **86** **87**

372 **88** **89**

378 **90** **91** Blue

386 **92** **93**

396 **94** **95**

406 **96** **97**

414 **98** **99**

422 **100** **101**

431 **102** Purple **103**

441 **104** **105**

451 **106** **107**

459 **108** **109**

467 **110** **111**

474 **112** **113**

480 **114** **115**

486 **116** Brown

490 **117**

494 **118**

498 **119**

502 **120**

506 **121**

509 **122**

512 **123**

515 **124** $\frac{3}{4}$ $\frac{3}{4}$

518 **125** $\frac{3}{4}$ $\frac{2}{4}$

521 **126** $\frac{2}{4}$ $\frac{2}{4}$

525 **127** $\frac{2}{4}$ **128** $\frac{2}{4}$ $\frac{2}{4}$

533 **129** $\frac{2}{4}$ **130** $\frac{2}{4}$ $\frac{3}{4}$

541 **131** $\frac{3}{4}$ $\frac{3}{4}$

544 **132** $\frac{3}{4}$ $\frac{3}{4}$

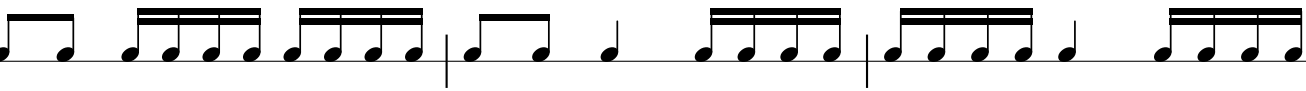
547 **133** $\frac{3}{4}$ **134** $\frac{3}{4}$ $\frac{3}{4}$


553 **135** $\frac{3}{4}$ **136** $\frac{3}{4}$ $\frac{3}{4}$


559 **137** $\frac{3}{4}$ $\frac{3}{4}$


562 **138** $\frac{3}{4}$ $\frac{3}{4}$


565 **139** $\frac{3}{4}$ $\frac{3}{4}$


568 **140** $\frac{3}{4}$ 

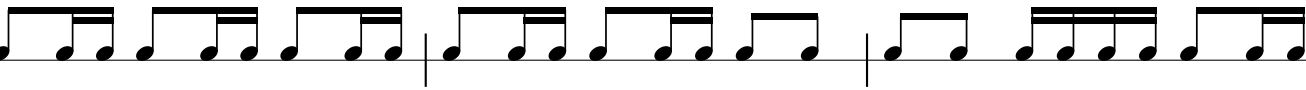
571 **141** Red $\frac{2}{4}$ 


575 **142** $\frac{2}{4}$ 


579 **143** $\frac{2}{4}$ 


583 **144** $\frac{2}{4}$ 

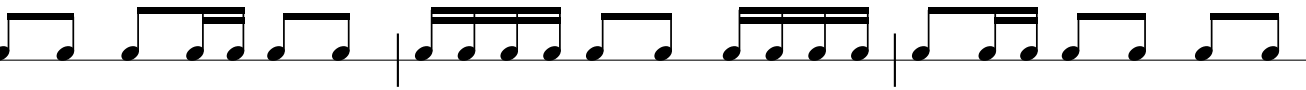
587 **145** $\frac{2}{4}$ 


591 **146** $\frac{3}{4}$ 

594 **147** $\frac{3}{4}$ 

597 **148** $\frac{3}{4}$ 

600 **149** $\frac{3}{4}$ 

603 **150** $\frac{3}{4}$ 

606 **151** Black $\frac{2}{4}$ 

610 **152** $\frac{2}{4}$ $\frac{2}{4}$

614 **153** $\frac{2}{4}$ $\frac{2}{4}$

618 **154** $\frac{2}{4}$ $\frac{2}{4}$

622 **155** $\frac{2}{4}$ $\frac{3}{4}$

626 **156** $\frac{3}{4}$ $\frac{3}{4}$

629 **157** $\frac{3}{4}$ $\frac{3}{4}$ **158** $\frac{3}{4}$ $\frac{3}{4}$

635 **159** $\frac{3}{4}$ $\frac{3}{4}$ **160** $\frac{3}{4}$ $\frac{3}{4}$

641 **161** $\frac{3}{4}$ $\frac{3}{4}$

644 **162** $\frac{3}{4}$ $\frac{3}{4}$

647 **163** $\frac{3}{4}$ $\frac{3}{4}$

650 **164** $\frac{3}{4}$ $\frac{3}{4}$

653 **165** $\frac{3}{4}$ $\frac{3}{4}$